



For less than the cost of an hour of labor, we can monitor your network 24 hours a day, 7 days a week

Focus On *Your* Business – We Focus on your IT!

At PC-PLUS Technologies, we know you can't manage what you can't measure. Our 24 x 7 monitoring, alerting and reporting service provides us with the information, data, network performance trending analysis and security vulnerability information critical to service, plan and manage your IT environment.

You have invested in your IT infrastructure and rely on its performance, security and reliability. PC-PLUS' services not only ensures you have a qualified team ready to service this critical asset but also the real time data to ensure its being done on time, when needed, using the most advanced network asset tracking and Performance monitoring

Highest Level of Service

PC-PLUS strives to provide every customer with best-in-class IT service, TechWatch provides the tools necessary to do even more.

- ✓ The TechWatch dashboard provides technicians with critical site information at a glance
- ✓ Faster access to data means more problems can be diagnosed accurately, researched faster and solved remotely.
- ✓ Email alerts keep you aware of critical issues and in many cases allow you to take action before your business is impacted.



Cost Savings

Constantly increases costs make it difficult to cope with technology related issues, TechWatch can help.

- ✓ Fast accurate data for technicians, means less costly time spent diagnosing problems.
- ✓ Server and network health reporting can identify aging equipment before you lose time, money and revenue during a disaster recovery.
- ✓ For about the cost of 1 hour per month, TechWatch can provide the same information as a technician checking out all of your equipment, every day, all day.

Features & Benefits

24 X 7 Monitoring, Alerting and Reporting

Central Dashboard

Sites and Groups	Devices	Websites	Tickets	Alerts											Total Alerts		
				0	0	2	1	2	2	28	3	2	0	0		0	
Managed ...	52	N/A	3	0	0	1	1	0	0	26	0	0	0	0	0	0	28
Managed D...	20	N/A	0	0	0	0	0	0	0	1	0	2	0	0	0	0	3
xp pro	32	N/A	0	0	0	0	0	2	0	1	0	0	0	0	0	0	3
Outsource ...	0	N/A	0	0	0	0	0	0	0	0	0	0	0	0	0	0	0
VDP Syst...	0	N/A	0	0	0	0	0	0	0	0	0	0	0	0	0	0	0
First Financial Inc	95	3	20	0	0	1	1	2	2	28	0	2	0	0	0	0	36
> Windows 2003 Servers	54	N/A	4	0	0	1	1	0	0	27	0	0	0	0	0	0	29
> Intel vPro	2	N/A	0	0	0	0	0	0	0	0	0	0	0	0	0	0	2
> Routers and Switches	2	N/A	1	0	0	0	0	0	0	2	0	0	0	0	0	0	2
> Windows Vista	1	N/A	0	0	0	0	0	0	0	0	0	0	0	0	0	0	2
> Windows XP	27	N/A	0	0	0	0	0	0	0	3	0	0	0	0	0	0	3
> Backup Server	1	N/A	0	0	0	0	0	0	0	1	0	0	0	0	0	0	1
> Domain Controller	1	N/A	0	0	0	0	0	0	0	0	0	0	0	0	0	0	0
> Linux Servers	1	N/A	0	0	0	0	0	0	0	0	0	0	0	0	0	0	0
> Printers	2	N/A	0	0	0	0	0	0	0	0	0	0	0	0	0	0	0
Acme Inc	4	0	0	0	0	1	0	0	0	0	3	0	0	0	0	0	4

Web-based Central Dashboard



Executive Summary
Website Availability
Site Performance

Real Time Alerting and Monthly Reporting

- Includes all systems, network devices, as well as website performance.
- Monthly reports provided and reviewed by PC-PLUS Technologies, Inc.

Asset Management

LEVEL PLATFORMS

Device Management

System Name: **EMCARTOR-01** Manufacturer: **System manufacturer** Model: **System Product Name**

Physical Memory (RAM): 8GB

CPUs

Processor	Manufacturer	Model	Speed	Check Status
(0000) Core2 Duo CPU 4400 @ 3.00GHz	Intel	Intel i5, Stepping 2	3.0 GHz	OK
(0001) Core2 Duo CPU 4400 @ 3.00GHz	Intel	Intel i5, Stepping 2	3.0 GHz	OK

Hard Drives

Device	Capacity (MB)	Used (MB)	Free (MB)
C:	80,000	10,000	70,000
D:	80,000	0	80,000

Network Cards

Name	MAC Address	SNMP
Wan Adapter (NIC1)	00-00-00-00-00-00	False
Wan Adapter (NIC2)	00-00-00-00-00-00	False
Wan Adapter (NIC3)	00-00-00-00-00-00	False
Wan Adapter (NIC4)	00-00-00-00-00-00	True

Device Management – Hardware/Software



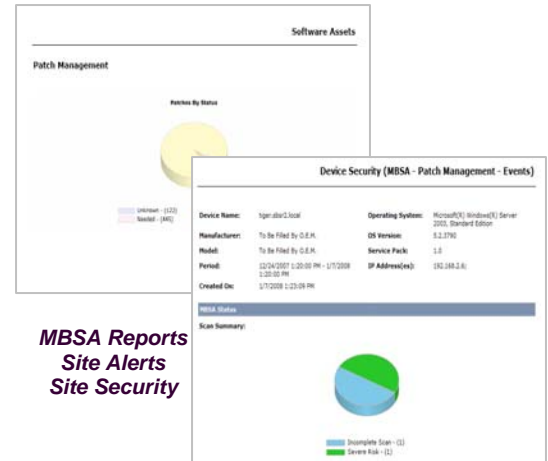
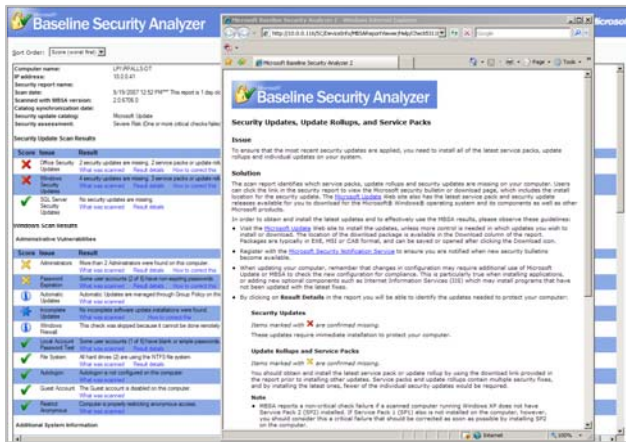
Site Hardware Summary
Device Attributes
Software Asset Inventory

Valuable Asset-based Control

- Complete summary of hardware & software
- Comprehensive detail of all hardware and software asset inventories.

Features & Benefits

Security Assurance



**MBSA Reports
Site Alerts
Site Security**

Microsoft Baseline Security Analyzer Report

Reduced Risk

- Baseline security scanning to detect security holes
- Continuous monitoring for viruses, worms, spam ware, and other malware.
- Automated verification of data backup completion and identification of any failed backups for Symantec Backup Exec Software

Try TechWatch 2.0 Free for 30 Days

Get started today and see for yourself how TechWatch subscribers are saving valuable time and money.

Call 508.756.9300 or email sales@pcplustech.com

